

iBENCH | SOLAR BENCH

DESCRIPTION

A hi-tech alternative to regular street benches, the iBench solar bench not only features an eye catching, yet minimalist and timeless design, but incorporates USB and Qi phone charging outlets, ambient lighting, sensors and Wi-Fi connectivity. All benches are constructed of stainless steel for maximum outdoor durability.

Also included with the standard bench are a range of sensors that can gather and store data on temperature, humidity and particulate matter, visitor activity and WiFi usage. All data including system health data such as solar power production, power usage, battery voltage, can be accessed from the web-based dashboard at any time, in any location.

iBench can normally function up to 5 days without direct sun exposure. In summer, the battery can charge within 1 day, in winter it can be considerably longer. In bad weather, the bench will automatically power off.



FEATURES

- Constant monitoring of energy production, usage & battery status
- Environmental sensors record temperature, humidity & rainfall.
- Monitors usage - number of devices charged, Wi-Fi users, data usage (MB)
- Access system data from any device – phone, tablet PC
- 3 independent PV panels enable charging even when seating is occupied.
- Air cooled seat surface with 4 fans- activates at 95°F
- WiFi modem offers internet access within the seating zone (requires service subscription)
- LED lights under bench switch on automatically when darkness falls
- Optional ambient light colors - warm-white, blue, yellow, green (other colors on request)

SPECIFICATIONS

SIZE	73" L x 18 ¾" W x 21 ½"H (full size bench)
WEIGHT	194 lb.
FRAME	Stainless steel, powder coated, weather-resistant and vandal-resistant
SEAT	Acrylic glass – plexiglas, 10mm thick
SOLAR PANELS	120W
BATTERY	AGM / Capacity: 40 Ah, 12V min. depending on the region
OUTLETS	2 x USB , 2 x Qi pads
LIGHTING	Ambient under bench LED lighting - warm white, blue, yellow or green
WARRANTY	2 years

OPTIONS

- Additional environmental sensors to provide data on local conditions
- Speakers to play music from Bluetooth equipped devices
- Strip lighting around edges of the bench – choice of 5 colors

STANDARD BENCH



Stainless steel, powder coated in any RAL color with 3 size options incorporating either 1, 2 or 3 solar panels

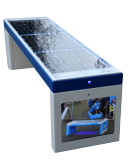
Full 3/3: 3 PV panels (73" L x 18 ¾" W x 21 ½"H)
Midi 2/3: 2 PV panels (48" L x 18 ¾" W x 21 ½"H)
Mini 1/3: 1 PV panel (26 ¾" L x 18 ¾" W x 21 ½"H)

BRUSHED STAINLESS STEEL



Stainless steel with brushed finish. All other features identical to Standard bench.

'URBAN'



Incorporates a display panel on one end – either e-paper or LED. Requires a mains electrical connection

